

HYDROMAX

HIGH EFFICIENCY SOLAR WATER HEATING SYSTEM

New Technology - Water storage tank is adapted to the advanced technology of vitreous enamel inner tank, which fuses to solid steel at about 900° C. The result is a smooth and tough surface that effectively resist the corrosive attacks of hot water chemicals, thus ensuring a long life span of water tank.

Best materials –

- Enamel: imported from USA Ferro who is the worldwide biggest enamel manufacturer;
- Inner tank steel: from Baosteel who is the Chinese biggest steel manufacturer;
- Steel surface cleaning Grit: imported from French W Abrasives who is the worldwide biggest abrasives manufacturer;
- Pressure and Temperature Relief Valve: imported from Canadian Watts;

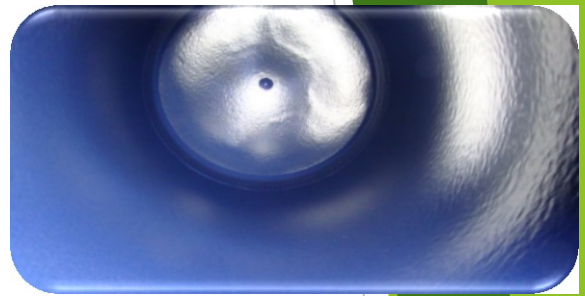
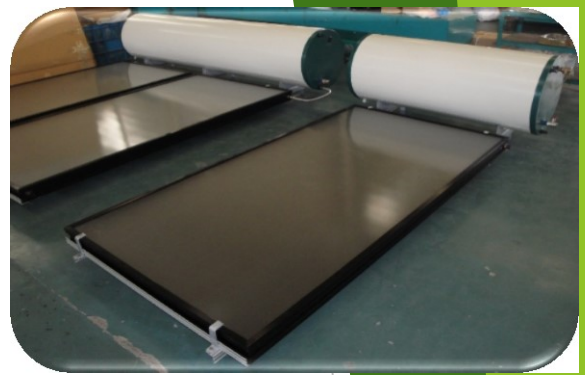
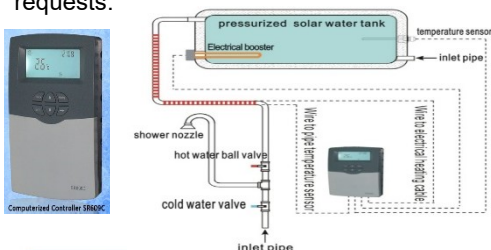
Insulation protection - CFC free polyurethane foam insulation is injected and surrounds the inner tank, filling the space between the inner tank and outer tank thus providing an exceptionally good heat retention barrier. This helps to reduce the energy cost by minimizing standby heat loss.

Electric Element – high-quality immersion type element ensures long lasting performance with choice of various heat input (kw) offering different hot water recovery rates.

Anode Protection - Each tank is provided with a magnesium anode rod to protect it against corrosion, a process well proven in years of application.

Safety Protection - Each tank is provided with a pressure and temperature relief valve (P/T valve). It protects the tank against excessive pressure and temperature by releasing its contents safely to the floor trap via the drain pipe.

Customized - We can make the customized tanks according to customer's requests.



Model	100L	300L
Water Tank		
Tank Capacity	100L	300L
Inner tank	High-quality Enameled steel, thickness 2.5mm	
Outer tank	Galvanized steel, 0.5mm	
Tank Insulation	Polyurethane foam, 50mm	
Connection	3/4"	
Working pressure	7 bar	
P/T valve	included	
Magnesium anode	included	
Electric heater	1.5kw, 2.0kw, 2.5kw	
Check valve	included	
Flat plate solar collector		
Header Pipes(mm)	Copper TP2 Φ22*0.8	
Riser Tubes(mm)	Copper TP2 Φ10*0.6	
Absorber coating	Black chrome	
Surface area	2 m ²	4 m ²
Welding	Laser	
Absorption	97%±2%	
Emissivity	10%±2%	
Insulation Material	Rock wool, 40mm	
Frame	Aluminum alloy 6063	
Frame Color	Silver / Black	
Cover Glass	Low iron textured tempered glass	
Cover Glass thickness	3.2 mm	
Glass Transmittance	>92%	
Testing Pressure	12 bar	
Back Sheet	Galvanized steel	
Supporting Stand		
Material	Aluminum alloy	
Installation	Sloping roof	

