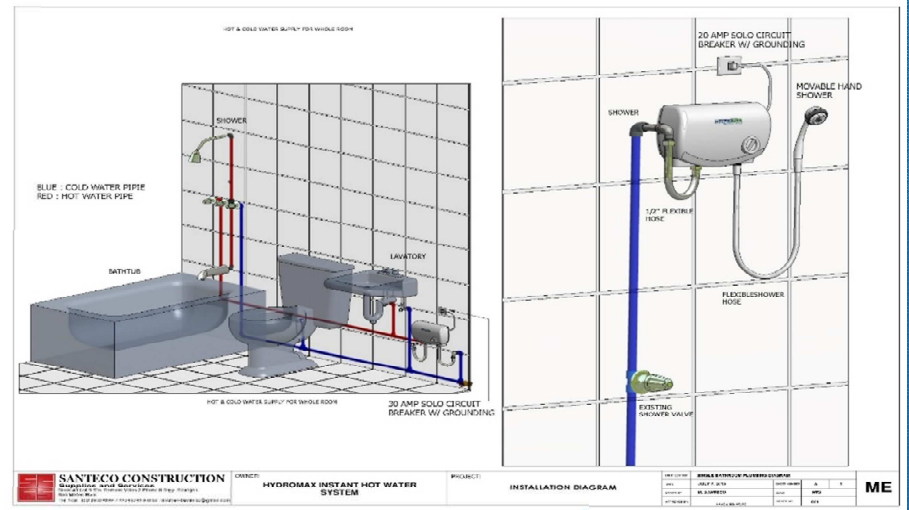


# HYDROMAX

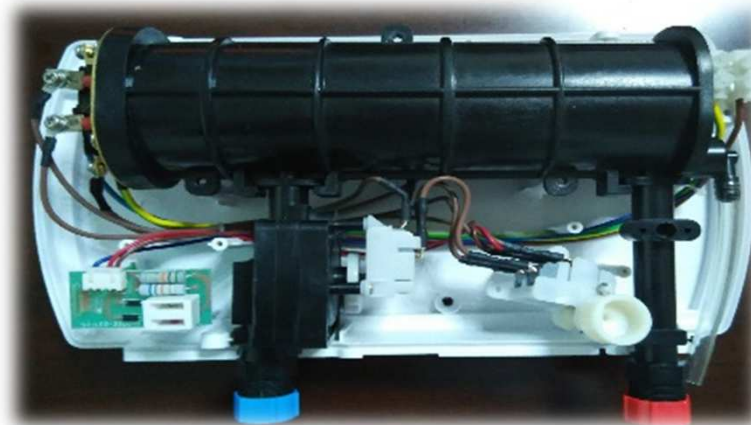
## TANKLESS INSTANT WATER HEATER



Voltage: 220V  
Model: HIM10055  
Power : 5.5kW  
Electric Current: 0-30A  
Hydraulic Pressure: 3 PSI  
Waterproof Degree: IPX4  
Max. Temperature: 50 °C  
Material: ABS panel : ABS panel  
Multipoint water supply



Voltage: 220V  
Model: HIS10035  
Power : 3.5kW  
Electric Current: 0-20A  
Hydraulic Pressure: 3 PSI  
Max Temperature: 50°C  
Waterproof Degree: IPX4  
Material : ABS panel  
Basic style: Single Point



### • ADVANTAGE OF HYDROMAX INSTANT HEATER

- **FULLY AUTOMATIC WITH PDFS FLOW SENSOR** – The heater will automatically cut-off after shutting down the water supply valve **either before and after the heater** with out turning off the power supply. It uses a highly sensitive advance Pressure Differential Switch to turn off the heater on both Single point and Multipoint model. 2 x more effective and durable than ordinary pressure and flow switch.
- **ANTI SCALDING DEVICE** –Automatically turn-off the power to avoid scalding.
- **HIGH DENSITY COMPOSITE PLASTIC HEATING CHAMBER** – Tested and proven to withstand highly corrosive water supply for 15 years. Its very easy to clean and maintain. Very economical and safer. (Not an electrical conductor)
- **DUAL COIL HEATING ELEMENT** – Low, Medium, High Settings to minimized electrical consumption.
- **AUTOMATIC PRESSURE RELIEF VALVE** – It release automatically too much pressure on the system incase of emergency situations.



**SANTECO CONSTRUCTION  
SUPPLIES AND SERVICES**  
TEL NO. 9565078 / 09255259745